

# Anatomy of Nose

Clinical points

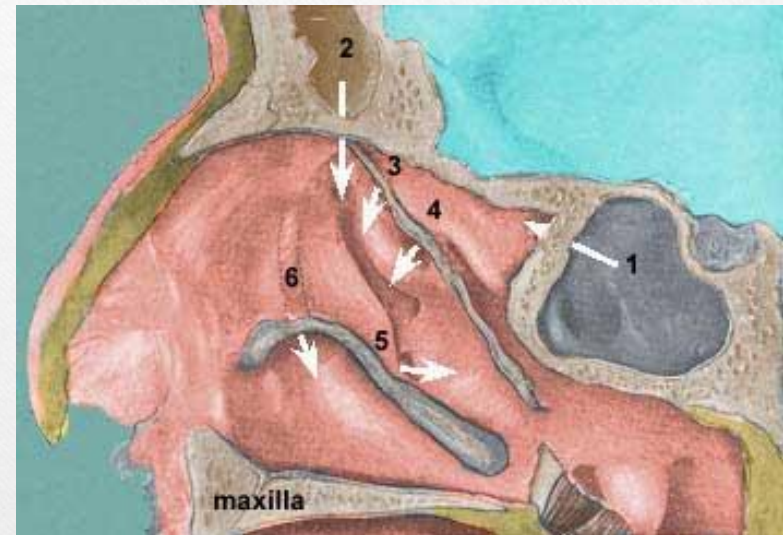
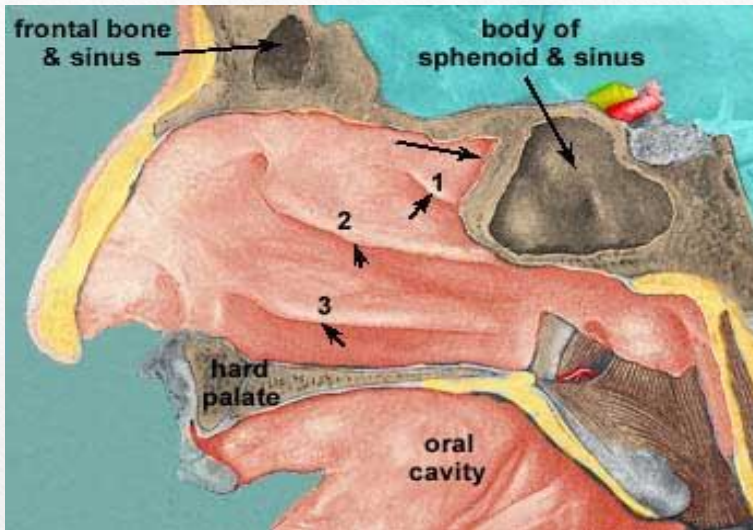
---

Presented by

**Ahmed Said El Nahas**

Lecture of ENT Sohag University

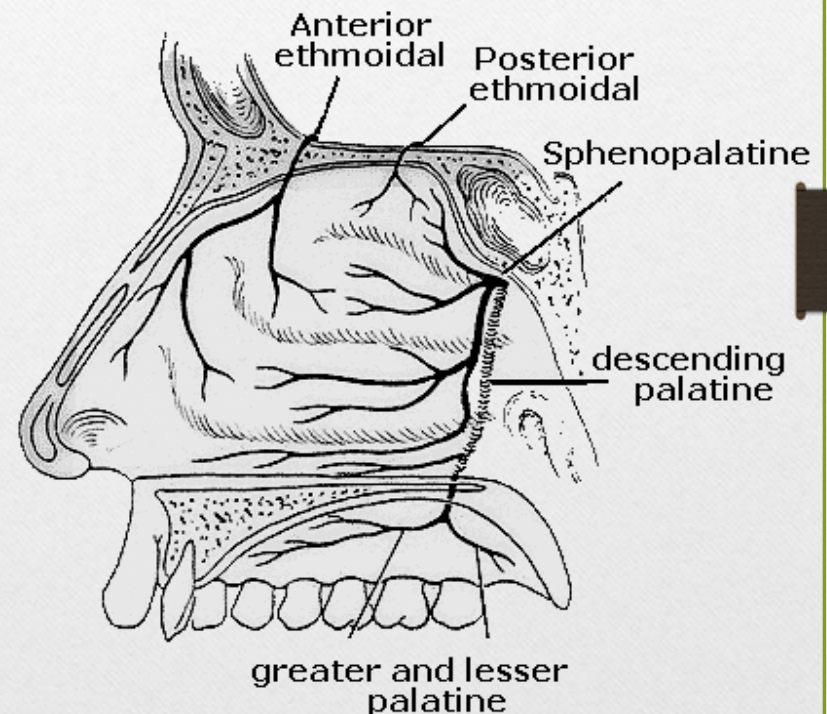
# Lateral Nasal Wall



- Middle meatus receives drainage from frontal, maxillary and ethmoidal sinuses.
- Frontal recess is most ant. sup. portion of middle meatus.
- Sphenoethmoidal recess medial to sup. turbinate is the location of ostium of sphenoid sinus.

# B1. And Nerve supply of lateral Nasal wall

- Majority of turbinates and meati supplied by **sphenopalatine**.
- The vascular supply is enhanced by cavernous plexus in particular on middle and inferior turbinates controlled autonomically.
- **Nerve supply** ant....**Ant.ethmoidal n.**  
Post....**branches of pterygopalatine** ganglion, with area of overlap between them.



# Para-nasal Sinuses

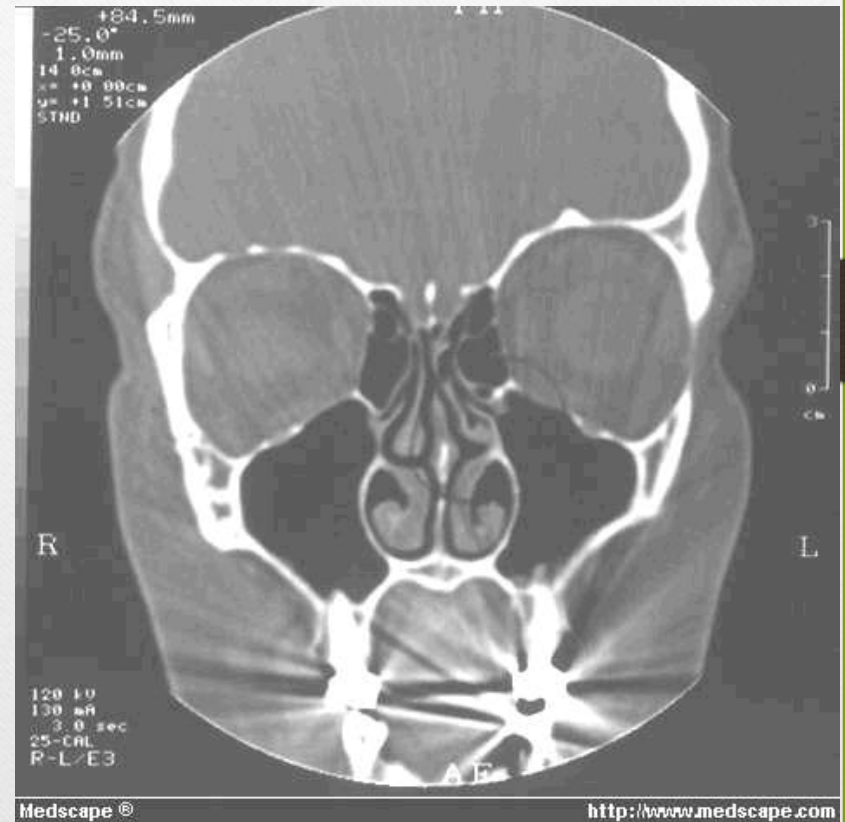
## Ethmoid Sinus:

2 ethmoidal labyrinths suspended on either side of perpendicular plate with intervening cribriform plate.

Bulla ethmoidalis.....the largest most constant cell.

Extensive pneumatisation post.....**Onodi cells.**

Extensive pneumatisation ant.at orbital floor.....**Haller cells.**



# Frontal Sinus

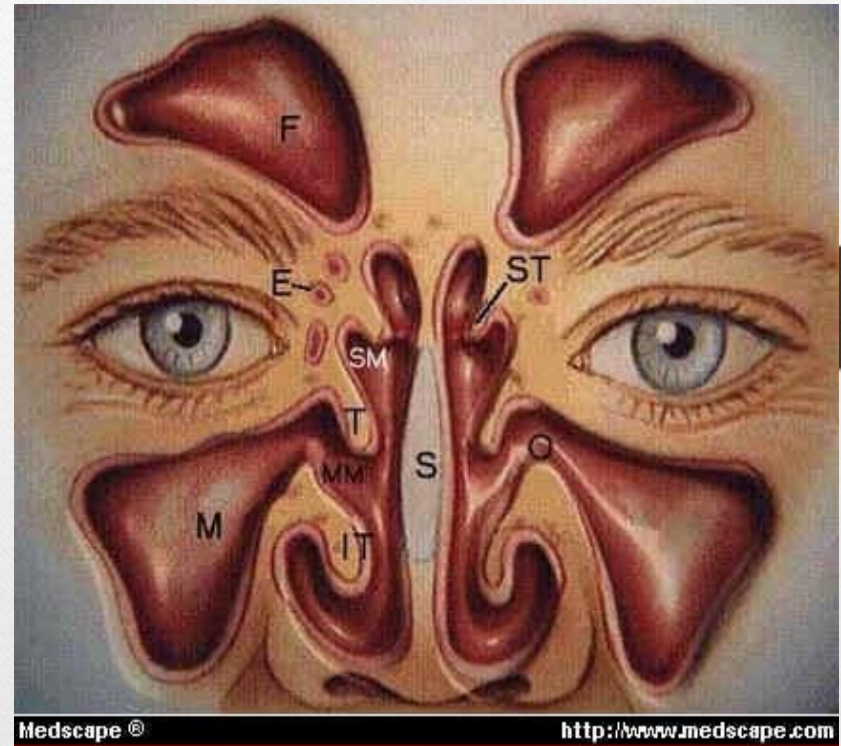
It forms the roof of ethmoidal sinuses.

## Relations:

**Inf.**....Ethmoid labyrinth, orbit, nasal cavity.

**Sup.**....Ant. cranial fossa.

**Med.**....Cribriform plate .



# Maxillary Sinus

---

Bone has 4 processes.....zygomatic,frontal,palatine and alveolar.

Ant.surface is characterised by ant.nasal spine.

- Relations:
- **Sup.** Infraorbital n.and artery and orbit.
  - **Inf.** Upper dentition and hard palate.
  - **Post.** Pterygopalatine and infratemporal fossae.
  - **Ant.** Cheek, skin and facial muscles.